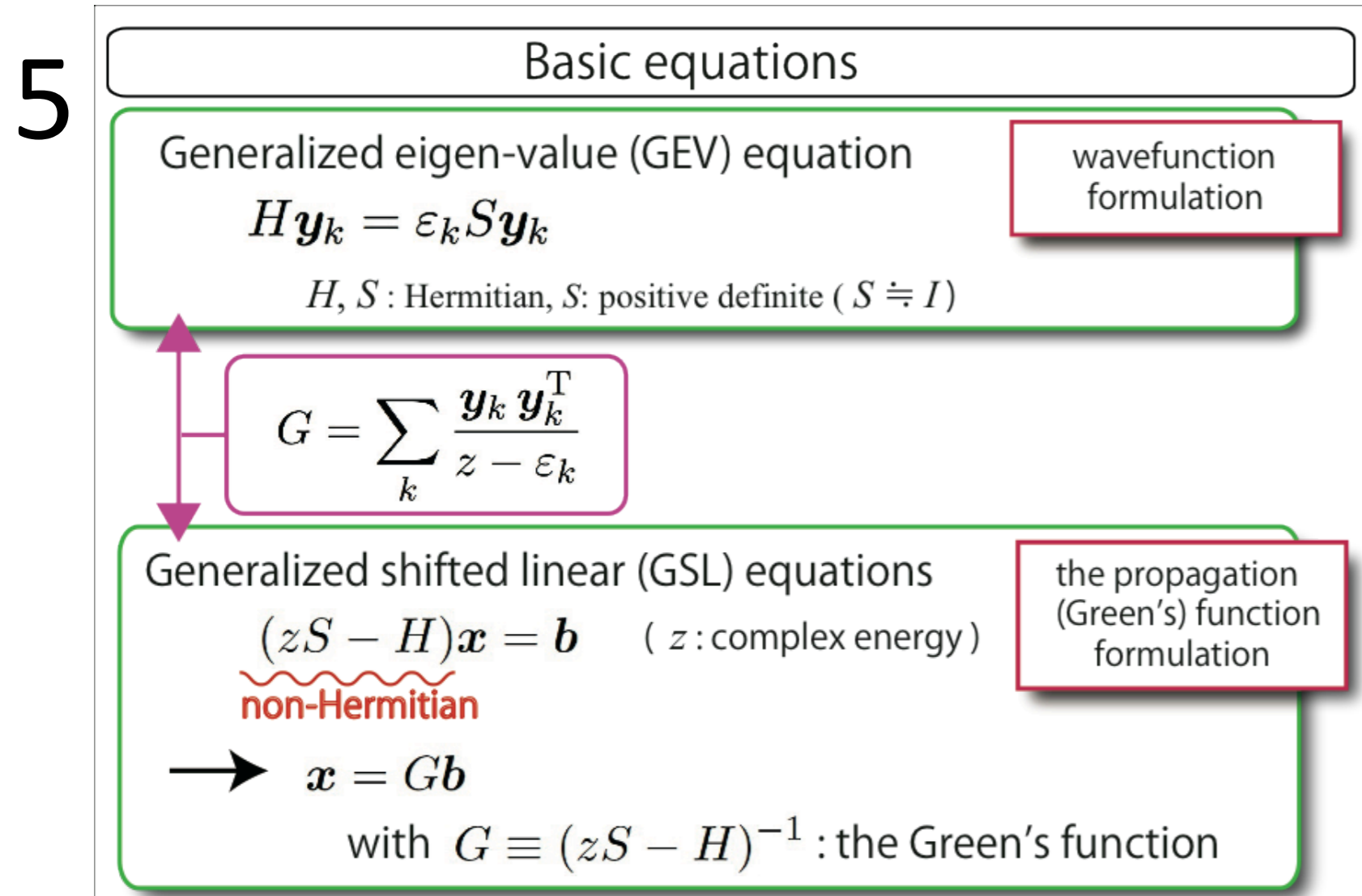
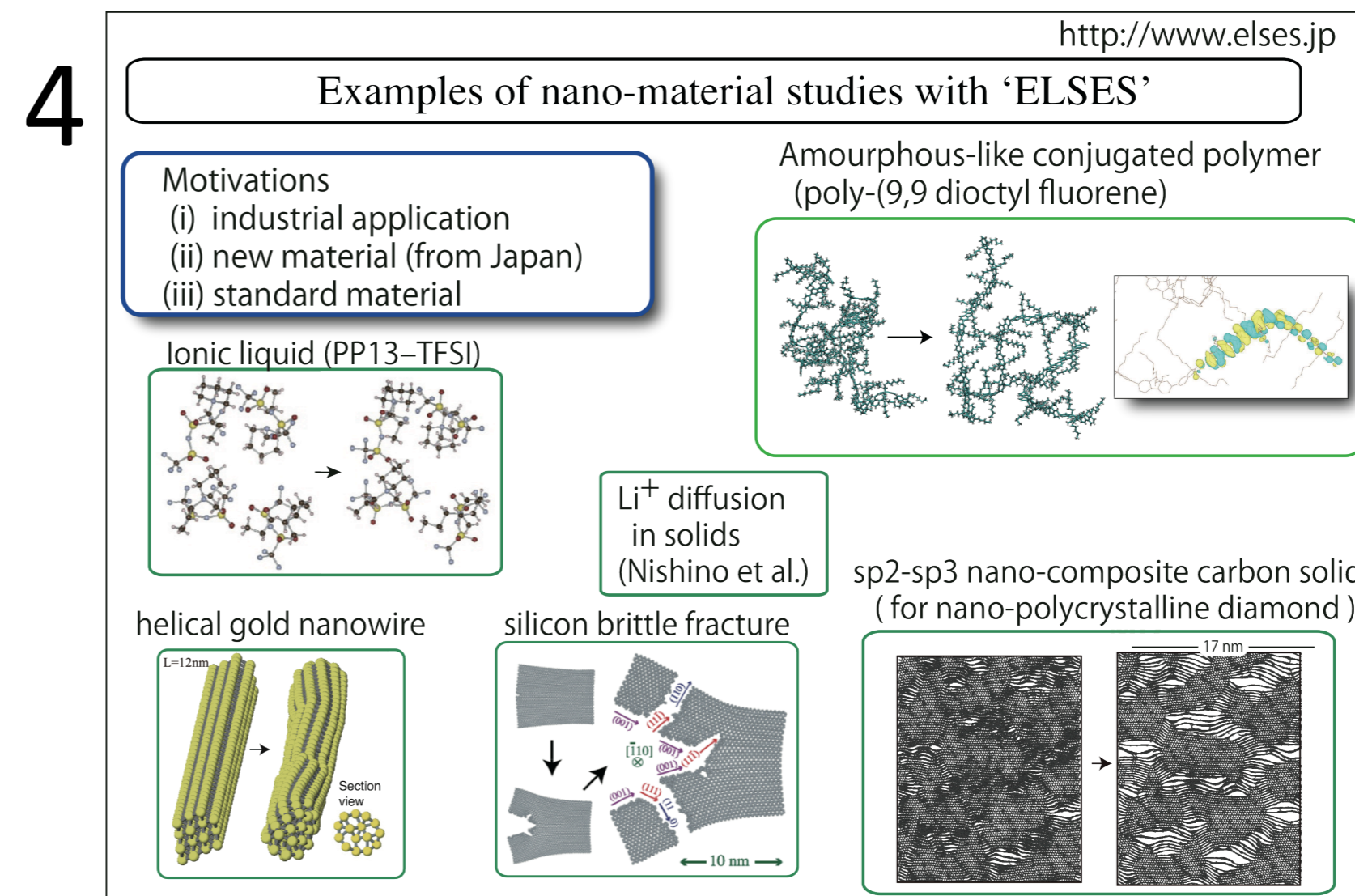
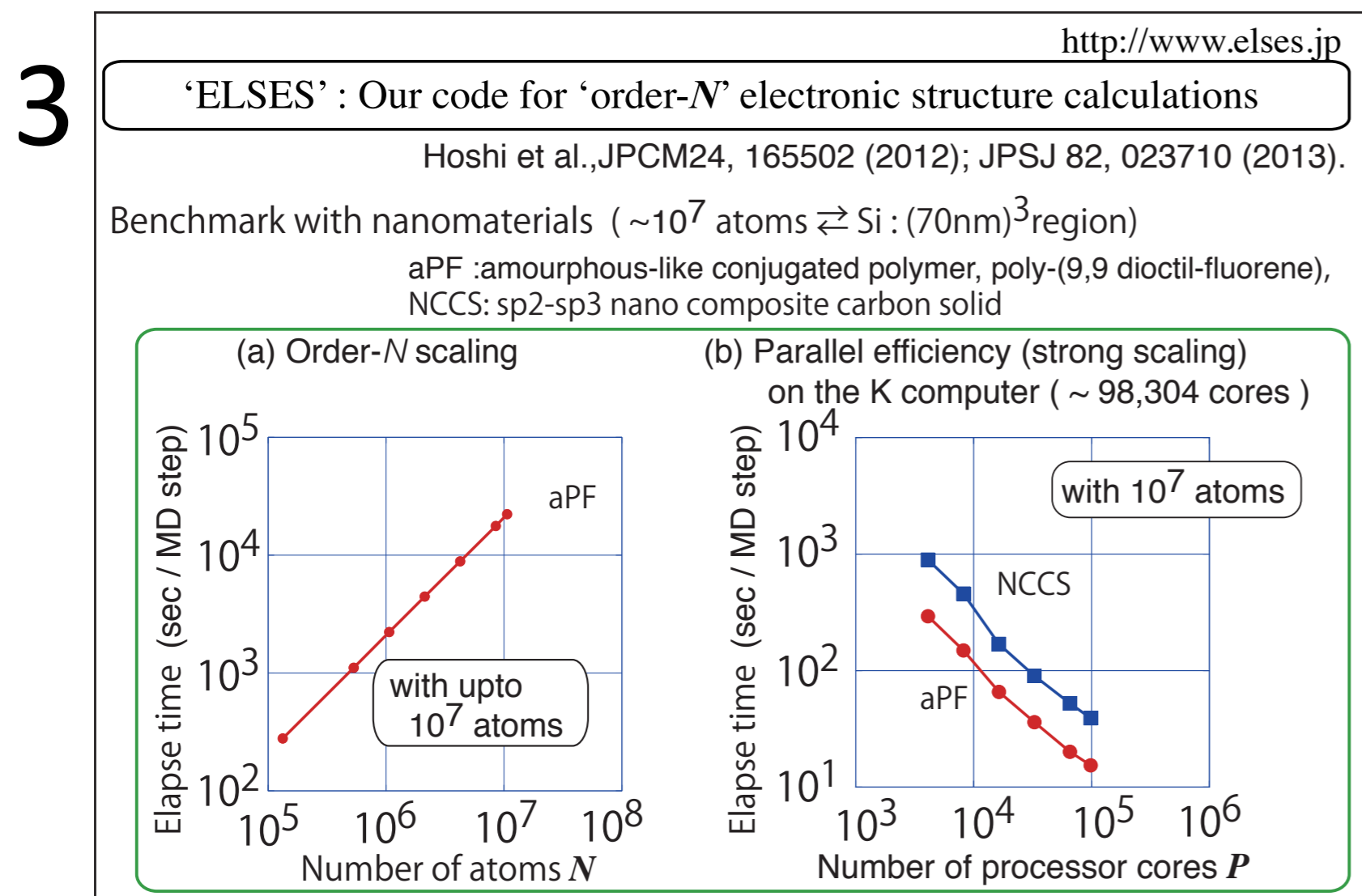
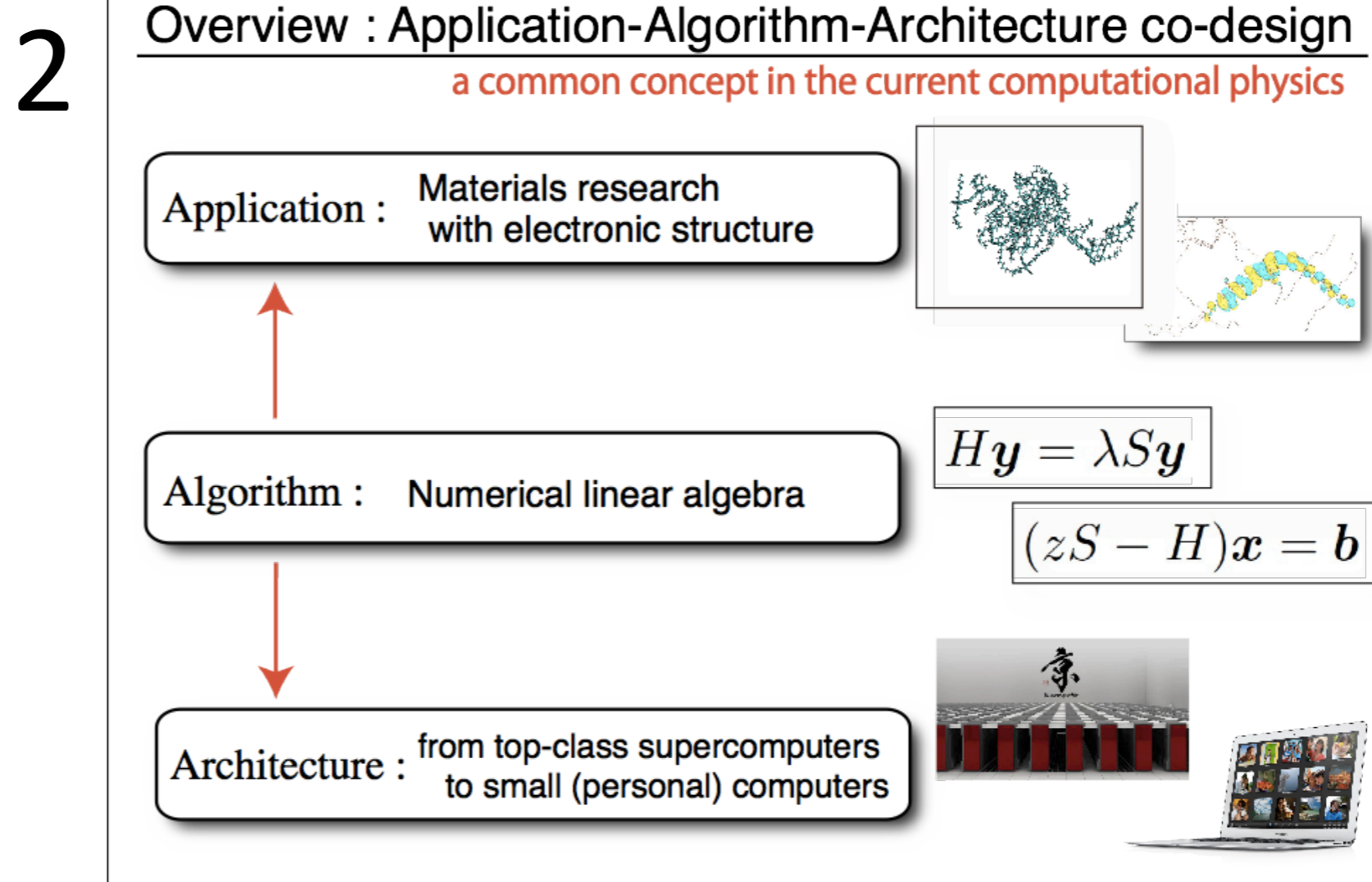
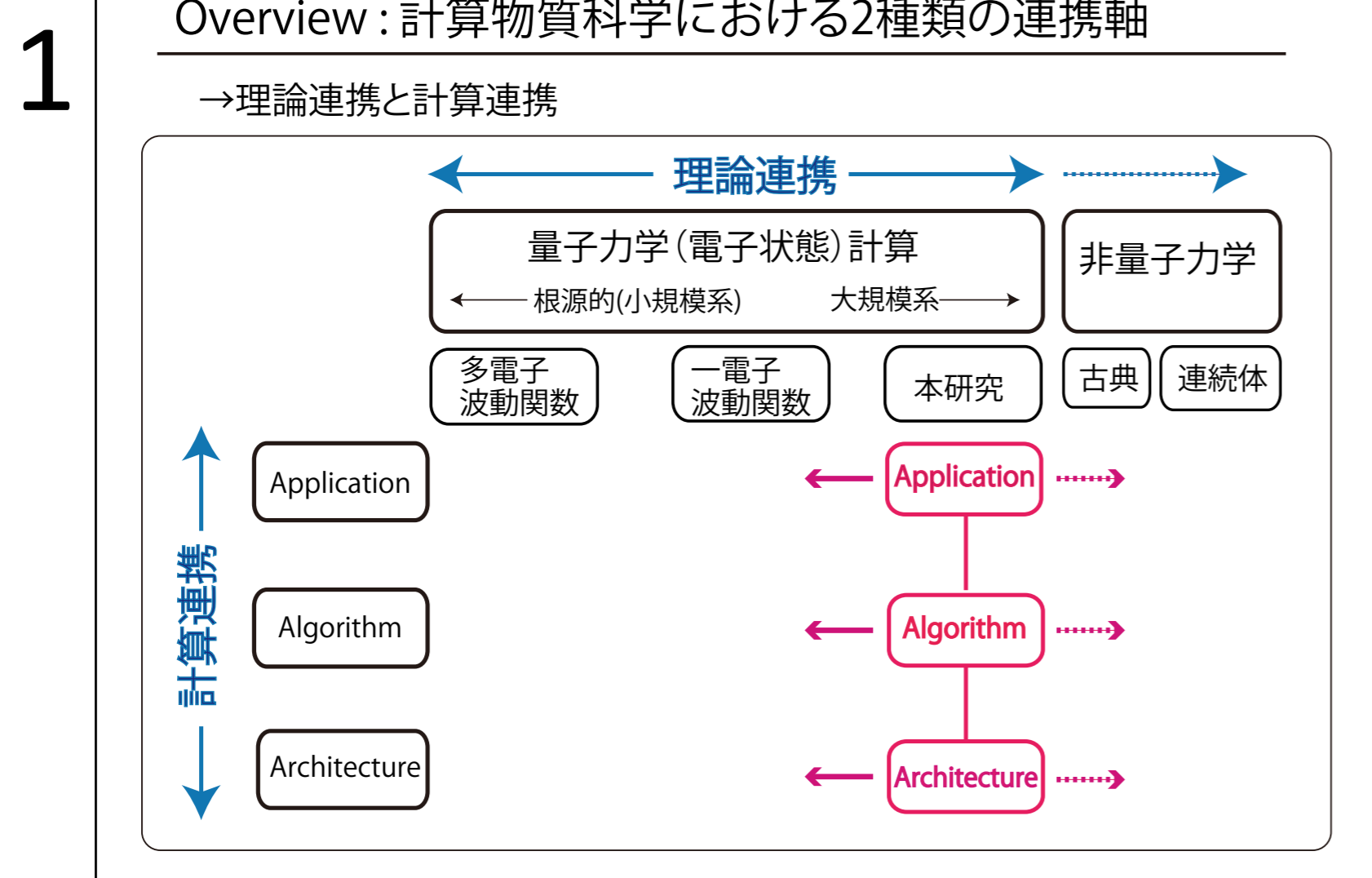




参加者: 曾我部知広^{1,2}(副代表), 張 紹良^{3,2}, 宮田考史^{3,2}, 山元進⁴, 西野信也⁵, 井町宏人⁵, 川居佳史⁶, 秋山洋平⁶, 山崎溪太⁶
¹愛知県立大, ²JST-CREST(Post Peta), ³名古屋大, ⁴東京工科大, ⁵東大, ⁶鳥取大,



6 Novel linear algebraic algorithms

[1] Teng et al., PRB 83, 165103 (2011); [2] Hoshi et al., JPCM 24, 165502 (2012).
 [3] Sogabe JCP 231, 5669 (2012); [4] Yamashita et al., Trans. JSIAM 21, 241 (2011).
 → Iterative (Krylov subspace) solvers for generalized shifted linear equation

$$(H - zS)\mathbf{x} = \mathbf{b}$$

non-hermitian

Mathematical principles	$S \neq I$	$S = I^*$
Gerlarkin Principle	gLanczos, gArnoldi, mArnoldi, Arnoldi (M;W;G)	subs. diag.
Collinear Residual	gsCOCG, gsQMR	sCOCG, sQMR

*Takayama et al., JPSJ73, 1519 (2004); Takayama et al. PRB 73, 165108(2006); Sogabe et al. ETNA31, 126 (2008)

