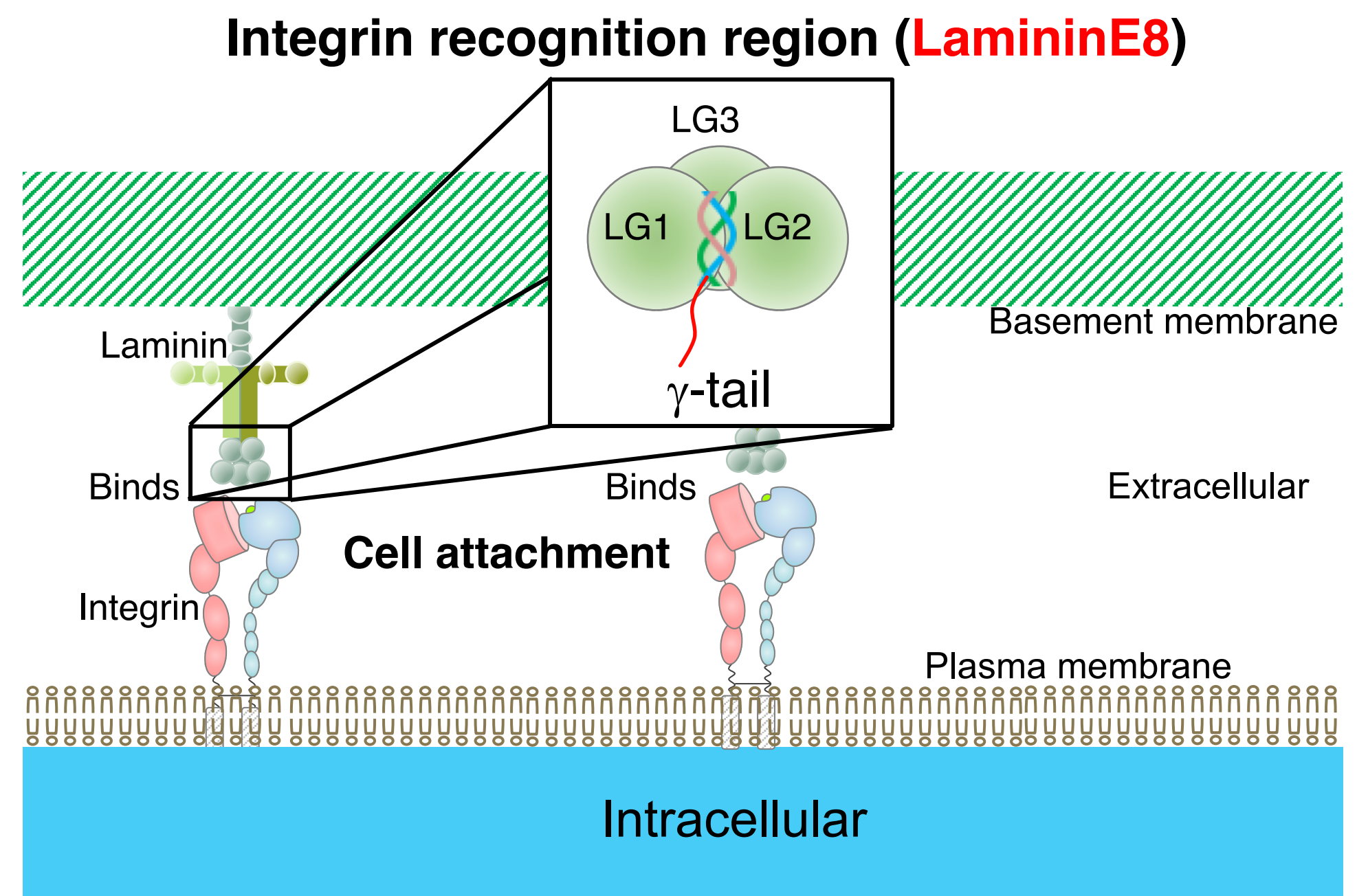
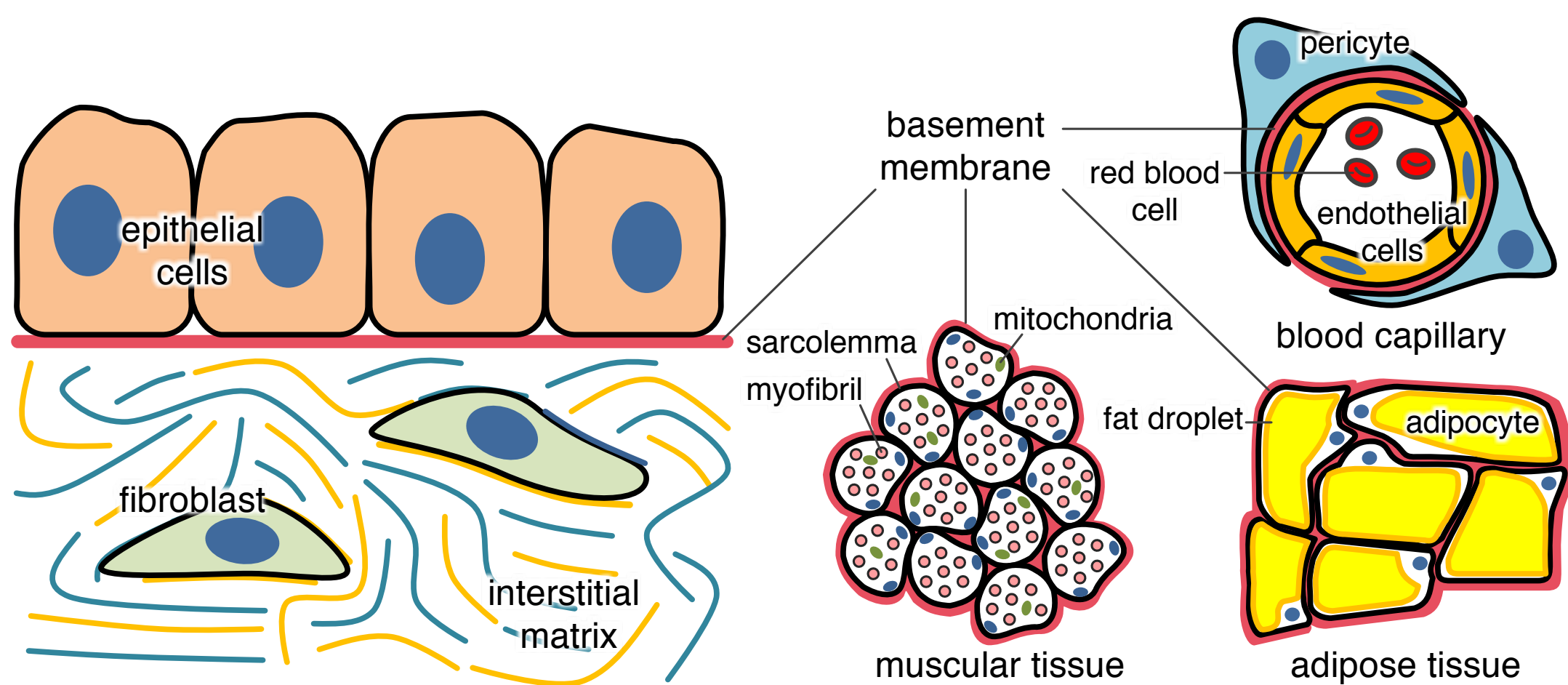




## Background: Laminin is one of the basement proteins.

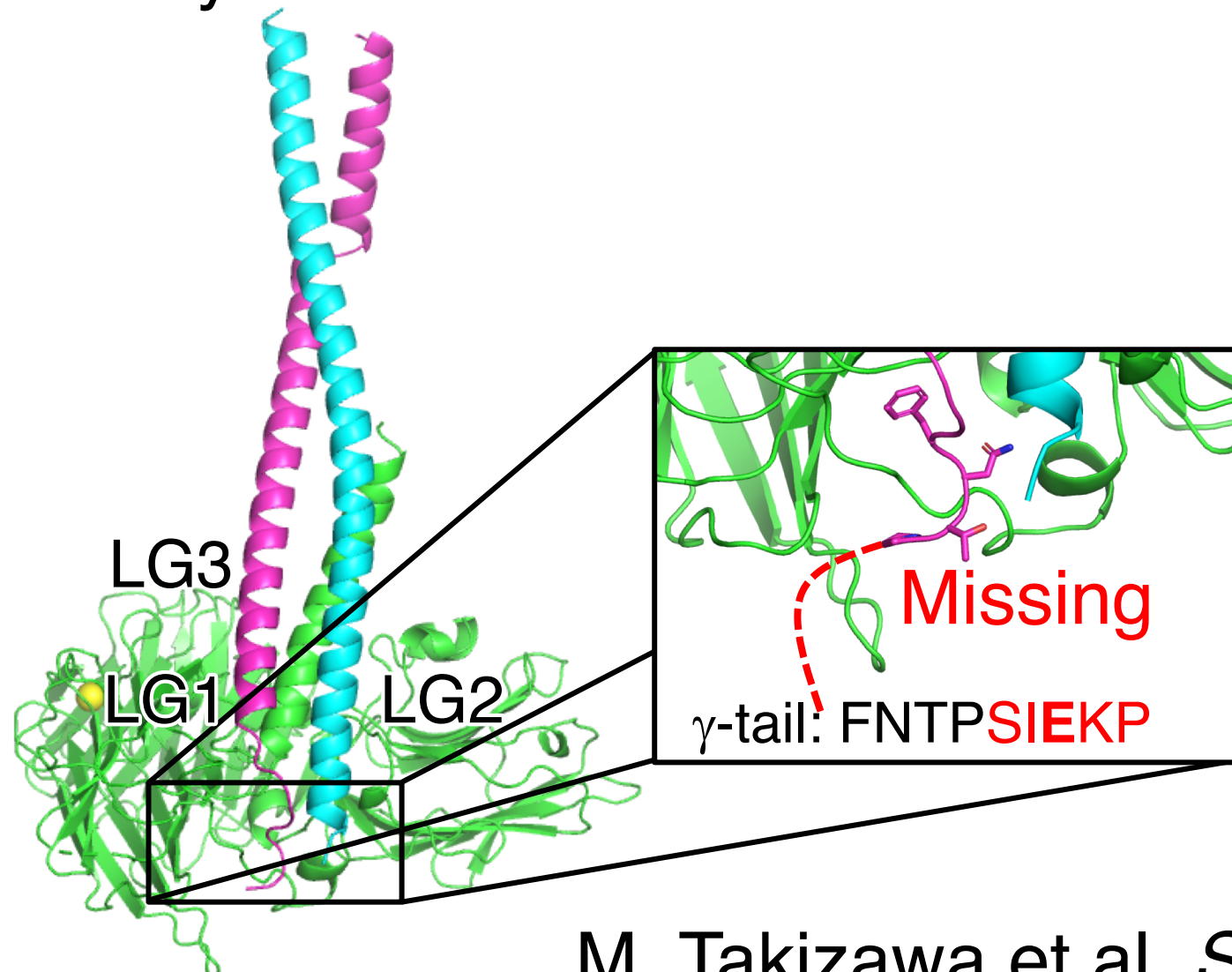
Basement membranes are ubiquitous



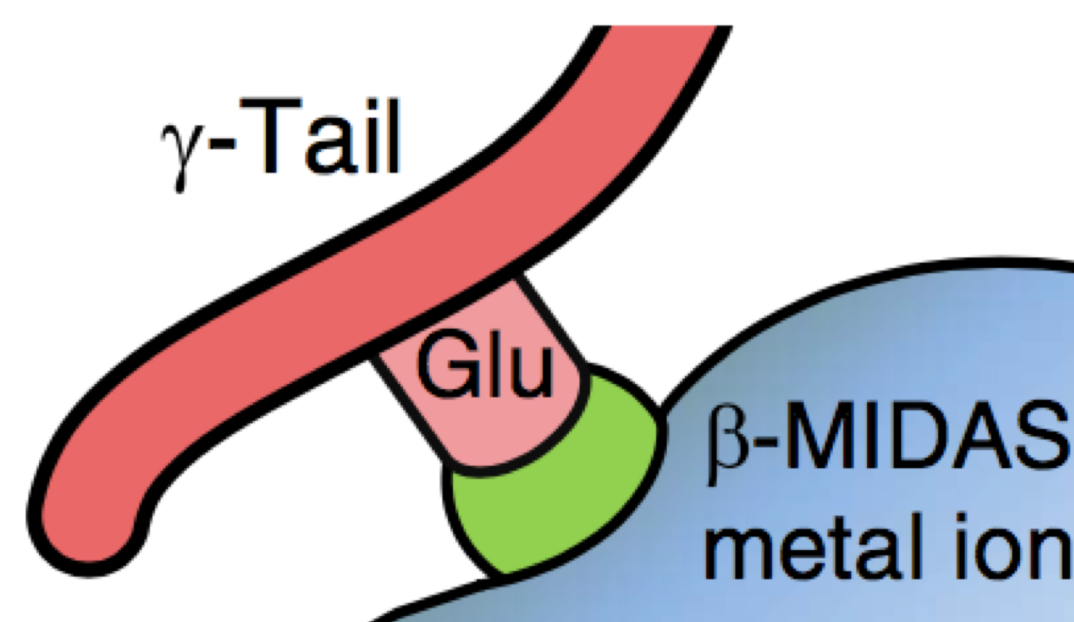
**Question: How does the laminin E8 recognize an integrin?**

## Earlier Studies

X-ray structure: Laminin E8



The Glu1607 is positioned at a region in an integrin.



By disulfide bond screening for the tail peptide and an integrin.

### Hypothesis

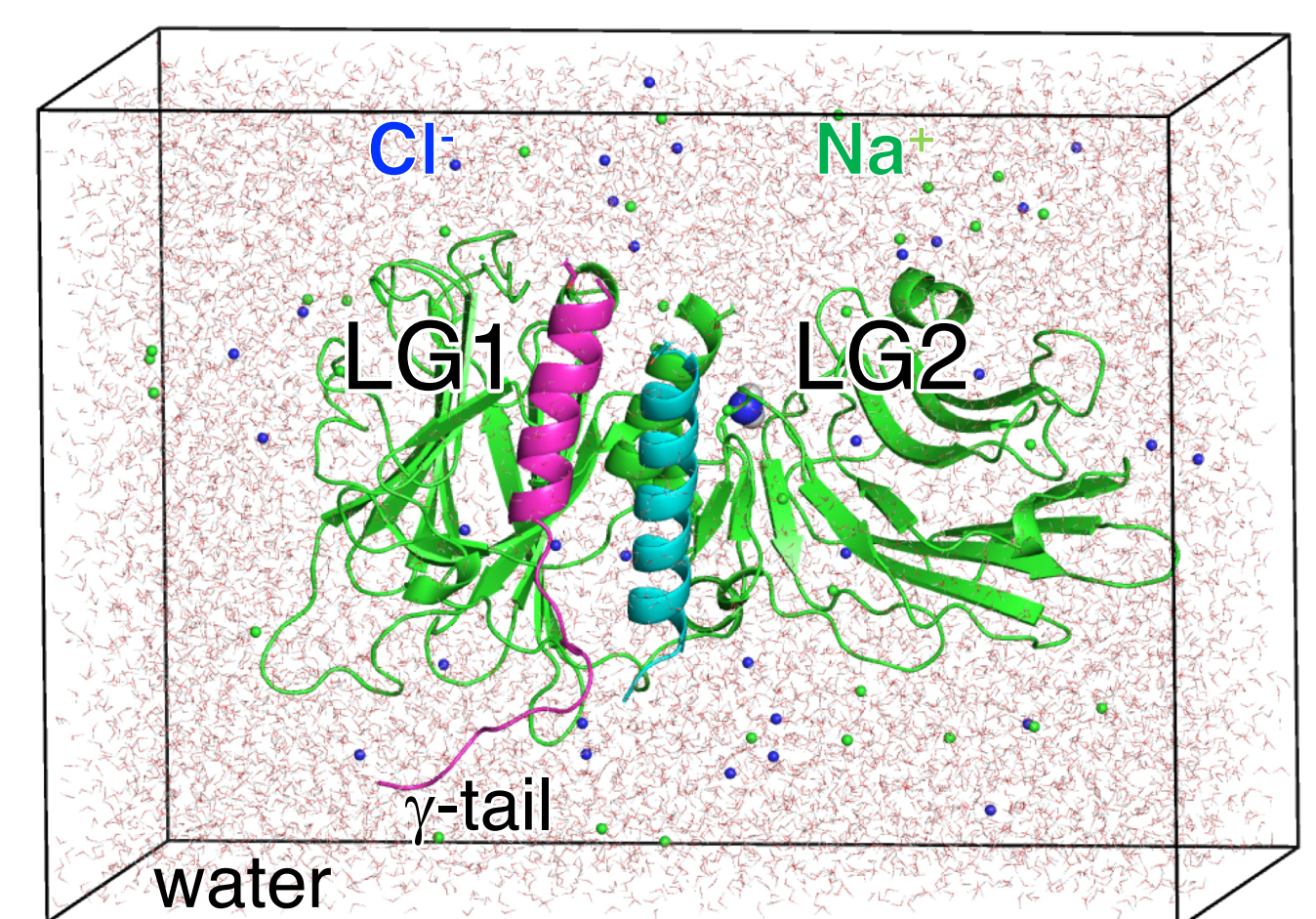
Laminin E8 exposes Glu1607 to the binding site of the integrin ahead of time?

Integrin-binding activity could benefit from such structures.

M. Takizawa et al. *Sci. Adv.*, 2017, 3, e1701497.

## Materials and Methods

I use all-atom molecular dynamics (MD) simulation combined with a generalized ensemble (GE) method in order to enhance structural sampling beyond that of conventional MD. The GE method is called virtual-system coupled Multicanonical Molecular Dynamics (V-McMD). I have already prepared a simulated system of laminin E8 (Right figure), which is being used in our simulations.



## Future Plan

By performing V-McMD simulations, a variety of structures of laminin E8 will be obtained, and that hypothesis will be verified. Moreover, I will show that my computational results would predict unknown phenomena for interaction of laminin E8 with an integrin. The prediction will be confirmed by my collaborators who will perform experiments.

I would like to thank Takizawa Mamoru, Taniguchi Yukimasa, and Sekiguchi Kiyotoshi